

**AT12 – TEREX-FRANNA AT MOBILE CRANE**



**TECHNICAL SPECIFICATIONS**

Maximum lifting capacity / radius:	12t @ 1.6m – 1t @15.5m
Main boom:	3.5 – 11.86m (4 section)
Main boom extension:	11.86 / 15.86m
Maximum system length:	15.86 + 2.66 = 18.4m
Overall length:	8.890m
Overall width:	2.400m
Overall height:	2.820m
Turning radius:	6.2m
Carrier engine:	Hino, 163HP, 6 cylinder diesel engine
Maximum travel speed:	85 km/h
Drive Axles:	Front & Rear heavy duty drive axles. Driver engaged air diff lock. Front axle
Steering:	Full Power ORBITROL through twin Hydraulic double acting rams, main pump supply plus electro hydraulic emergency supply
Tyres:	12.00 x 20 x 18 Ply Duals
Maximum gradeability:	50%



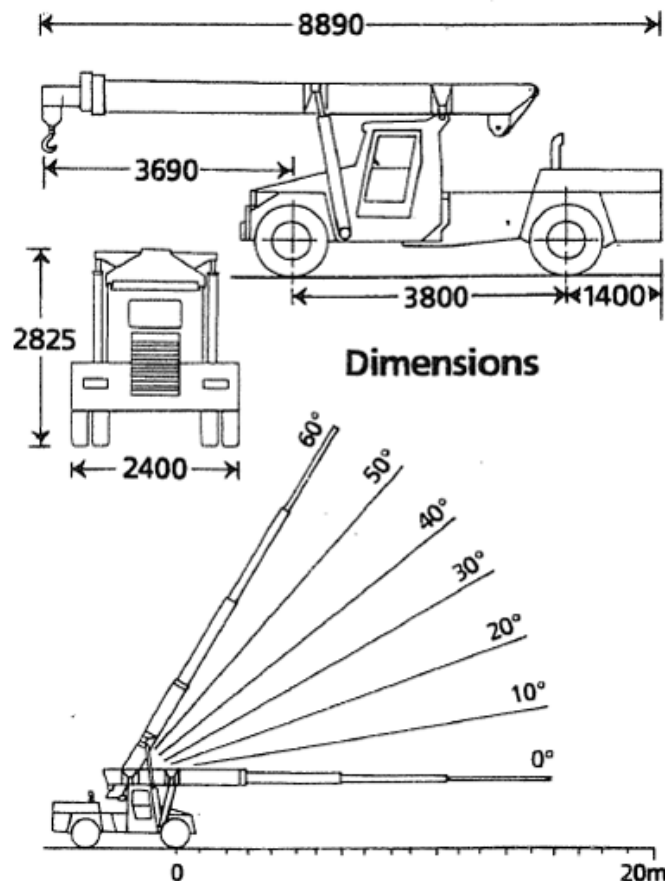
**Model 4WD 12 Tonne Load Chart**

RADIUS IN METRES	BOOM ANGLE	Boom length in metres – manual extension retracted																MANUAL EXTENSION EXTENDED		
		5.66	6.00	6.50	7.00	7.50	8.00	8.50	9.00	9.50	10.0	10.5	11.0	12.0	12.5	13.0	13.66	16.56	16.56	17.56
RADIUS IN METRES	60°				7.50	7.50	7.50	7.50	7.10	6.50	6.00	5.50	5.00	4.60	4.25	3.95	3.65	3.35	2.30	1.95
					1.20	1.45	1.70	1.95	2.20	2.45	2.70	2.95	3.20	3.45	3.70	3.95	4.20	4.50	5.95	6.45
	50°	7.50	7.50	7.50	7.50	7.50	7.25	6.50	5.90	5.40	4.80	4.35	3.95	3.65	3.35	3.10	2.85	2.60	1.80	1.60
		1.35	1.55	1.90	2.20	2.55	2.85	3.15	3.50	3.80	4.15	4.45	4.80	5.10	5.40	5.75	6.05	6.50	8.35	9.00
	40°	7.50	7.50	7.50	7.10	6.25	5.55	5.00	4.55	4.15	3.80	3.50	3.25	3.00	2.80	2.60	2.35	2.15	1.55	1.35
		2.10	2.35	2.75	3.10	3.50	3.90	4.25	4.65	5.05	5.40	5.80	6.15	6.55	6.95	7.30	7.70	8.20	10.45	11.20
	30°	7.50	7.50	6.45	5.65	5.00	4.50	4.05	3.70	3.40	3.10	2.85	2.65	2.45	2.30	2.15	2.00	1.85	1.35	1.20
		2.70	3.00	3.40	3.85	4.30	4.70	5.15	5.60	6.00	6.45	6.90	7.30	7.75	8.20	8.60	9.05	9.60	12.15	13.00
	20°	7.10	6.35	5.55	4.85	4.35	3.90	3.55	3.20	2.95	2.70	2.50	2.30	2.15	2.00	1.90	1.75	1.60	1.25	1.10
		3.15	3.50	3.95	4.40	4.90	5.35	5.85	6.30	6.75	7.25	7.70	8.20	8.65	9.10	9.60	10.05	10.65	13.40	14.35
	10°	6.40	5.80	5.05	4.45	4.00	3.60	3.25	2.95	2.70	2.50	2.30	2.15	2.00	1.85	1.75	1.60	1.50	1.15	1.05
		3.45	3.80	4.30	4.80	5.30	5.75	6.25	6.75	7.25	7.75	8.25	8.70	9.20	9.70	10.20	10.70	11.35	14.20	15.20
0°	6.15	5.55	4.85	4.30	3.85	3.45	3.15	2.85	2.65	2.40	2.25	2.05	1.95	1.80	1.70	1.55	1.45	1.10	1.00	
	3.60	3.95	4.45	4.95	5.45	5.95	6.45	6.95	7.45	7.95	8.45	8.95	9.45	9.95	10.45	10.95	11.60	14.50	15.50	

RADIUS IN METRES	BOOM ANGLE	Boom pivot to INNER lug. 1 <sup>st</sup> jib extension manual extension retracted									
		3.50	4.00	4.50	5.00	5.50	6.00	6.50	7.00	7.50	
RADIUS IN METRES	60°							11.00	11.00	11.00	
								1.20	1.45	1.70	
	50°				11.00	11.00	11.00	9.75	8.30	7.10	
					1.15	1.50	1.80	2.10	2.45	2.75	
	40°		11.00	11.00	11.00	9.70	8.05	6.80	5.85	5.10	
			1.00	1.40	1.75	2.15	2.55	2.90	3.30	3.75	
	30°		11.00	11.00	9.25	7.60	6.35	5.40	4.70	4.10	
			1.40	1.85	2.25	2.70	3.15	3.55	4.00	4.45	
	20°	11.00	11.00	9.85	7.90	6.50	5.45	4.65	4.05	3.50	
		1.25	1.70	2.15	2.65	3.10	3.60	4.05	4.50	5.00	
	10°	12.00	11.65	8.95	7.20	5.95	5.00	4.30	3.70	3.25	
		1.40	1.90	2.35	2.85	3.35	3.85	4.35	4.85	5.35	
0°	12.00	11.30	8.70	7.00	5.80	4.85	4.15	3.60	3.15		
	1.45	1.95	2.45	2.95	3.45	3.95	4.45	4.95	5.45		

RADIUS IN METRES	BOOM ANGLE	Boom pivot to OUTER lug. 1 <sup>st</sup> jib extension manual extension retracted								
		4.50	5.00	5.50	6.00	6.50	7.00	7.50	8.00	8.50
RADIUS IN METRES	60°					11.00	11.00	11.00	10.15	8.40
						1.20	1.45	1.70	1.95	2.20
	50°		11.00	11.00	11.00	10.20	8.70	7.50	6.60	5.85
			1.15	1.50	1.80	2.10	2.45	2.75	3.10	3.40
	40°	11.00	11.00	10.25	8.50	7.20	6.25	5.45	4.80	4.25
		1.40	1.75	2.15	2.25	2.90	3.30	3.70	4.05	4.45
	30°	11.00	9.85	8.05	6.75	5.80	5.00	4.40	3.85	3.45
		1.85	2.25	2.70	3.15	3.55	4.00	4.45	4.85	5.30
	20°	10.55	8.40	6.95	5.85	5.00	4.35	3.80	3.35	3.00
		2.15	2.65	3.10	3.60	4.05	4.50	5.00	5.45	5.95
	10°	9.60	7.70	6.40	5.40	4.65	4.00	3.50	3.10	2.75
		2.35	2.85	3.35	3.85	4.35	4.85	5.35	5.80	6.30
0°	9.35	7.50	6.20	5.25	4.50	3.90	3.45	3.05	2.70	
	2.45	2.95	3.45	3.95	4.45	4.95	5.45	5.95	6.45	

<b>Boom fully extended. Manual extended 4.0m. Fly jib fitted.</b>		
<b>BOOM ANGLE</b>	<b>RADIUS (m)</b>	<b>S.W.L (tonne)</b>
60°	7.75	0.75
50°	10.65	0.70
40°	13.20	0.65
30°	15.25	0.60
20°	16.80	0.55
10°	17.75	0.50
0°	18.10	0.50



**Dimensions**