

AT16 – TEREX-FRANNA AT MOBILE CRANE

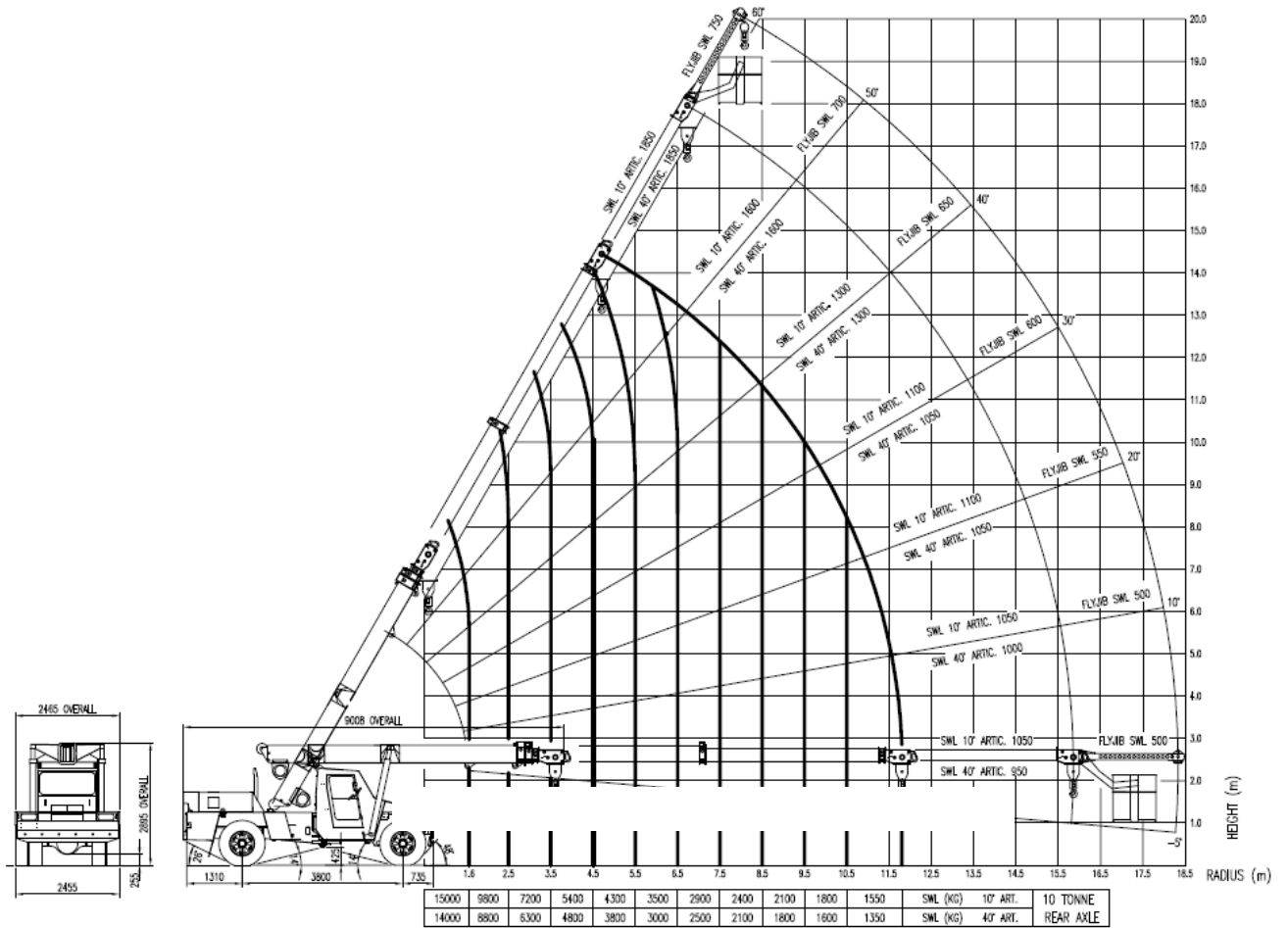


TECHNICAL SPECIFICATIONS

Maximum lifting capacity / radius:	16t
Main boom:	3.5 – 11.86m (4 section)
Main boom extension:	11.86 / 15.86m
Maximum system length:	15.86 + 2.66 = 18.4m
Overall length:	9.008m
Carrier length:	5.845m
Turning radius over boom head:	11.4 / 9.7m
Carrier engine:	Mercedes OM906LA inline 6.37litre, 6 cylinder, EC Turbo with Intercooled Turbo timer 170kw @ 2200rpm 710nm @ 1000rpm
Maximum travel speed:	85 km/h
Drive Axles:	Front – Meritor RS-25-260 with driver selectable diff lock. Rear – Meritor RS-23-160. High/Low Range via airshift, 2WD/4WD via airshift
Steering:	Full Power ORBITROL through twin Hydraulic double acting rams with end stop cushioning.
Tyres:	11.00 x 20 Bias Ply Duals
Maximum gradeability:	50%



Model 4WD 16 Tonne Load Chart Q160





Model 4WD 16 Tonne Load Chart Q160

Machinery Hook Safe Working Load (S.W.L)

1. MAX SWL Above line hook block chart 8 tonnes
2. SWL Below line hook block chart as per hook block (see 7.)

Hoist Ropes

1. Nominal Diameter: 14.00mm const: 18x7(12x7) (6/1) /6x7(6x1) FC PJ Fibre RHOL Pre/Post Non Rotating Wire Rope. B2070. Min. Breaking Load: 128kN. Machine Splice & Thimble Eye, one end only. Length: 65.00m.

or

2. Nominal Diameter: 14.00mm const: 12x7(6/1)6x7(6/1) NR Fibre RHOL perform. B2070, Min. Breaking Load: 128kN. Machine Splice & Thimble Eye, one end only. Length 65.00m.

Definitions

1. Operating Radius is the horizontal distance from the vertical axis of rotation before loading to the centre of the vertical hoist line or tackle with load applied.
2. Loaded boom angle is the included angle between the horizontal and longitudinal axis of the boom base after lifting the rated load at the rated radius
3. Crane load ratings are for machines with 10.5 tonnes rear axle weight and do not exceed 67% of tipping
4. Weights of hooks, hook blocks, slings and all other load handling devices shall be added to the weight of the load.
5. Boom length as read from boom angle indicator.
6. Boom angle as read from boom angle indicator.
7. When using hook block chart from machinery hook use length as read on boom length indicator + 500mm.
8. Lift and Carry – The SWL shall be carried on the fully retracted boom as close to the ground as possible with tyres 1200x20x18 ply correctly inflated to 120PSI and at speeds not in excess of 4 KPH.



Model 4WD 16 Tonne Load Chart Q160

Winch Safe Working Loads

- Single Part 3.25 Tonnes
- Two Parts 6.5 Tonnes
- Three Parts 9.5 Tonnes

SAFE WORKING LOAD IN TONNES AT 67% TIPPING
RADIUS IN METERS

BOOM ANGLE	HOOK BLOCK – MANUAL EXTENSION RETRACTED																		4.1m MAN. EXT.
	5.65	6.00	6.50	7.00	7.50	8.00	8.50	9.00	9.50	10.0	10.5	11.0	11.5	12.0	12.5	13.0	13.5	13.8	
60°			9.75	9.75	9.75	9.75	9.75	9.75	9.75	9.75	9.30	8.50	7.80	7.20	6.60	6.20	5.80	5.50	2.65
			1.09	1.35	1.60	1.80	2.05	2.30	2.55	2.80	3.05	3.30	3.55	3.80	4.05	4.30	4.55	4.75	6.80
50°	9.75	9.75	9.75	9.75	9.75	9.75	8.90	8.10	7.30	6.75	6.20	5.70	5.30	4.90	4.60	4.30	4.10	3.90	2.30
	1.45	1.75	2.00	2.35	2.65	3.00	3.30	3.60	3.95	4.25	4.60	4.90	5.25	5.50	5.85	6.20	6.50	6.75	9.35
40°	9.75	9.75	9.75	9.30	8.20	7.40	6.60	6.00	5.50	5.10	4.70	4.30	4.00	3.80	3.50	3.30	3.10	3.00	1.95
	2.15	2.45	2.80	3.20	3.60	3.95	4.35	4.75	5.10	5.50	5.85	6.25	6.65	7.00	7.40	7.80	8.20	8.45	11.5
30°	9.75	9.75	8.60	7.60	6.75	6.00	5.40	5.00	4.50	4.20	3.85	3.60	3.30	3.10	2.95	2.70	2.60	2.50	1.75
	2.75	3.00	3.45	3.90	4.30	4.75	5.20	5.60	6.05	6.50	6.95	7.35	7.80	8.25	8.65	9.10	9.50	9.80	13.3
20°	9.60	8.60	7.50	6.60	5.90	5.30	4.80	4.40	4.00	3.70	3.40	3.10	2.90	2.70	2.60	2.40	2.20	2.10	1.50
	3.15	3.48	3.95	4.40	4.90	5.35	5.80	6.30	6.75	7.25	7.70	8.15	8.65	9.10	9.60	10.0	10.5	10.8	14.7
10°	8.90	8.00	6.90	6.10	5.50	4.90	4.40	4.10	3.70	3.40	3.20	2.90	2.70	2.50	2.40	2.20	2.10	2.00	1.40
	3.40	3.75	4.25	4.70	5.20	5.70	6.20	6.70	7.20	7.65	8.20	8.65	9.15	9.65	10.2	10.6	11.1	11.4	15.5
0°	8.60	7.80	6.80	6.00	5.30	4.80	4.30	4.00	3.60	3.30	3.10	2.90	2.70	2.50	2.30	2.20	2.00	1.90	1.40
	3.50	3.85	4.35	4.85	5.35	5.85	6.35	6.85	7.35	7.85	8.35	8.85	9.35	9.85	10.3	10.8	11.3	11.7	15.8

BOOM ANGLE	BOOM PIVOT TO LUG – 1 ST BOOM EXTENSION MANUAL EXTENSION RETRACTED									
	4.15	4.50	5.00	5.50	6.00	6.50	7.00	7.50	8.00	8.25
60°							12.0	12.0	12.0	12.0
							1.05	1.30	1.55	1.80
50°			12.6	12.6	12.6	12.60	12.0	10.3	9.00	8.45
			1.05	1.35	1.70	2.00	2.35	2.65	3.00	3.15
40°	13.1	13.1	13.1	13.1	11.6	9.80	8.40	7.30	6.50	6.10
	1.00	1.30	1.65	2.05	2.45	2.80	3.20	3.55	3.95	4.15
30°	13.5	13.5	13.5	11.0	9.1	7.80	6.70	5.90	5.20	4.90
	1.45	1.75	2.15	2.60	3.00	3.45	3.90	4.30	4.75	5.00
20°	13.8	13.8	11.4	9.40	7.90	6.70	5.80	5.10	4.50	4.20
	1.70	2.05	2.55	3.00	3.45	3.95	4.40	4.85	5.35	5.60
10°	13.9	13.0	10.4	8.60	7.20	6.20	5.30	4.70	4.10	3.90
	1.90	2.25	2.75	3.25	3.75	4.25	4.70	5.20	5.70	5.95
0°	14.0	12.6	10.1	8.30	7.00	6.00	5.20	4.50	4.00	3.80
	2.00	2.35	2.85	3.35	3.85	4.35	4.85	5.35	5.85	6.10

FIXED HOOK ON MAIN BOOM	
ANGLE IN DEGREES	CAPACITY IN TONNES
60°	
50°	
40°	
30°	16
20°	16
10°	16
0°	16