

**MC355C – MAEDA MINI CRAWLER CRANE**



**TECHNICAL SPECIFICATIONS**

Maximum lifting capacity / radius:	2,930kg / 2.5m
Main boom:	12.335m
Boom stages:	4 booms pentagon-type & 1 boom hexagonal-type
Total width	1.300m
Overall length:	4.290m
Total height:	1.845m
Total weight:	3.120kg
Outrigger type:	Drop Down
Carrier engine:	Water Cooled Diesel 3TNA 72L-UMS (YANMER) – Output: 19ps/3000rpm
Speed:	Forward: 1.28km/h Reverse: 1.28km/h
Drive Axles:	2-wheel drive (4x2) / 4-wheel drive (4x4) selection. Full floating shaft tube type front and rear
Steering:	Right & Left Independent Control
Tyres: (Caterpillar Tracks)	Rubber Crawler 280mm (W) x 1720mm (L)
Hook speed:	11.5m / min

**Lift capacities @ radius**

3m	5m	6m	8m
2.350kg	1.300kg	855kg	540kg

## WORKING RANGE LIFT CHART

### MC-355HC

For Boom ①, Booms ① + ②

To be used in the standard stroke extension of outriggers.

Working radius (m)	2.0 or less	2.25	2.5	2.7	3.0	3.5	4.0	4.5	5.0	5.53
Rated load for crane main body	2900	2900	2900	2600	2300	1950	1650	1450	1250	1150
Rated load (kg)	2900	2900	2900	2600	2300	1950	1650	1370	1080	900

When extending boom ③, operate according to the performance for booms ① + ② + ③

For Booms ① + ② + ③

To be used in the standard stroke extension of outriggers.

Working radius (m)	2.0 or less	2.7	3.0	3.5	4.0	4.5	5.0	5.5	6.0	7.0	7.73
Rated load for crane main body	2300	2300	2100	1700	1400	1200	1050	950	850	700	650
Rated load (kg)	2300	2300	2100	1700	1400	1200	1050	920	780	590	490

When extending boom ③, from boom ② more than half the length of the mark ③, operate according to the performance for booms ① + ② + ③ + ④

For Booms ① + ② + ③ + ④

To be used in the standard stroke extension of outriggers.

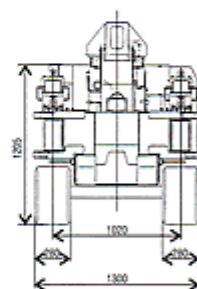
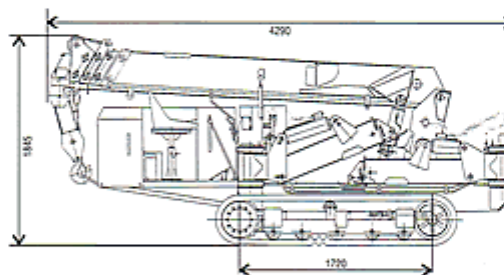
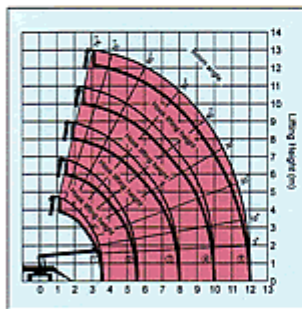
Working radius (m)	4.0 or less	4.5	5.0	5.5	6.0	7.0	8.0	9.0	9.93
Rated load for crane main body	1000	900	800	750	700	600	530	470	450
Rated load (kg)	1000	900	800	750	700	590	480	390	290

When extending boom ⑤, operate according to the performance for boom ⑤ shown in the next table

For Boom ⑤ extension

To be used in the standard stroke extension of outriggers.

Boom angle (°)	70 or more	65	60	50	40	30	20	10	3
Rated load for crane main body	600	500	400	300	250	220	200	200	200
Rated load (kg)	600	500	400	300	250	220	200	200	200



### SPECIFICATIONS

<b>CRANE MODEL</b>	MC-355HC
<b>CRANE CAPACITY</b>	3.0 x 2.4m
<b>MAX. WORKING RADIUS</b>	12.135m
<b>MAX. LIFTING HEIGHT</b>	Approx. 11.8m
<b>TYPE</b>	6 x Ws (26)
<b>WIRE ROPE</b>	φ8 x 73m
<b>No. OF TURNS OF ROPE</b>	4 turns
<b>HOOK SPEED</b>	11.5m / min
<b>BOOM LENGTH</b>	12.335m
<b>BOOM STAGES</b>	4 Booms: Pentagon-type + 1 Boom Hexagonal-type
<b>TELESCOPING TYPE</b>	Sequentially operating two cylinders + simultaneous wire rope operating + OMS type hydraulic extensions
<b>HYDRAULIC TELESCOPING STROKE</b>	6.61m
<b>TIME FOR EXTENSION</b>	28sec
<b>BOOM ELEVATING METHOD</b>	Direct push type two double-acting cylinders
<b>BOOM ELEVATING ANGLE</b>	3° - 76°
<b>TIME FOR BOOM ELEVATING</b>	13 sec
<b>SLEWING METHOD</b>	Hydraulic motor
<b>SLEWING ANGLE</b>	360° continuous
<b>SLEWING SPEED</b>	2.8rpm
<b>OUTRIGGERS</b>	Two step extension hydraulic cylinder push type

<b>SAFETY DEVICES</b>	Load meter, angle meter, automatic hydraulic lock, (pilot check), overwinding alarm (dry battery type equipped on boom top), hydraulic safety valve
<b>ENGINE TYPE</b>	Water cooled diesel 37NA 72L-UMS (YANMAR)
<b>OUTPUT</b>	18ps/3000rpm
<b>GRADABILITY</b>	30
<b>SPEED</b>	Forward 1.28km/h Reverse 1.28km/h
<b>DRIVING DEVICE</b>	Hydraulic Motor
<b>BRAKE ANGLE</b>	22°
<b>STEERING SYSTEM</b>	RIGHT & LEFT INDEPENDENT CONTROL
<b>SIDE TURN STABILITY</b>	35°
<b>CRAWLER</b>	RUBBER CRAWLER
<b>CRAWLER WIDTH</b>	280mm
<b>CRAWLER LENGTH</b>	1720mm
<b>GROUND PRESSURE</b>	31.4Kpa (0.32kg/cm <sup>2</sup> )
<b>HYDRAULIC PUMP</b>	Dual tandem gear pump
<b>RELIEF SET PRESSURE</b>	20.6Mpa (210kg/cm <sup>2</sup> ) (for crawling), 19.1Mpa (195kg/cm <sup>2</sup> ) (for crane)
<b>HYDRAULIC OIL TANK</b>	76L
<b>GROSS WEIGHT</b>	3120kg
<b>TOTAL LENGTH</b>	4290mm
<b>TOTAL WIDTH</b>	1300mm
<b>TOTAL HEIGHT</b>	1845mm
<b>HYDRAULIC OIL TANK</b>	36L